



AllFusion Harvest™ / Conigma™ in Relation to the SAP Solution Manager

GALILEO GROUP

"Consulting without technology does not scale, without people it does not count"

GALILEO GROUP



Current customers define the minimum requirements for tool based SCCM for SAP



These requirements contain functions for

- Change Management**
- Configuration Management**
- Delivery Management**

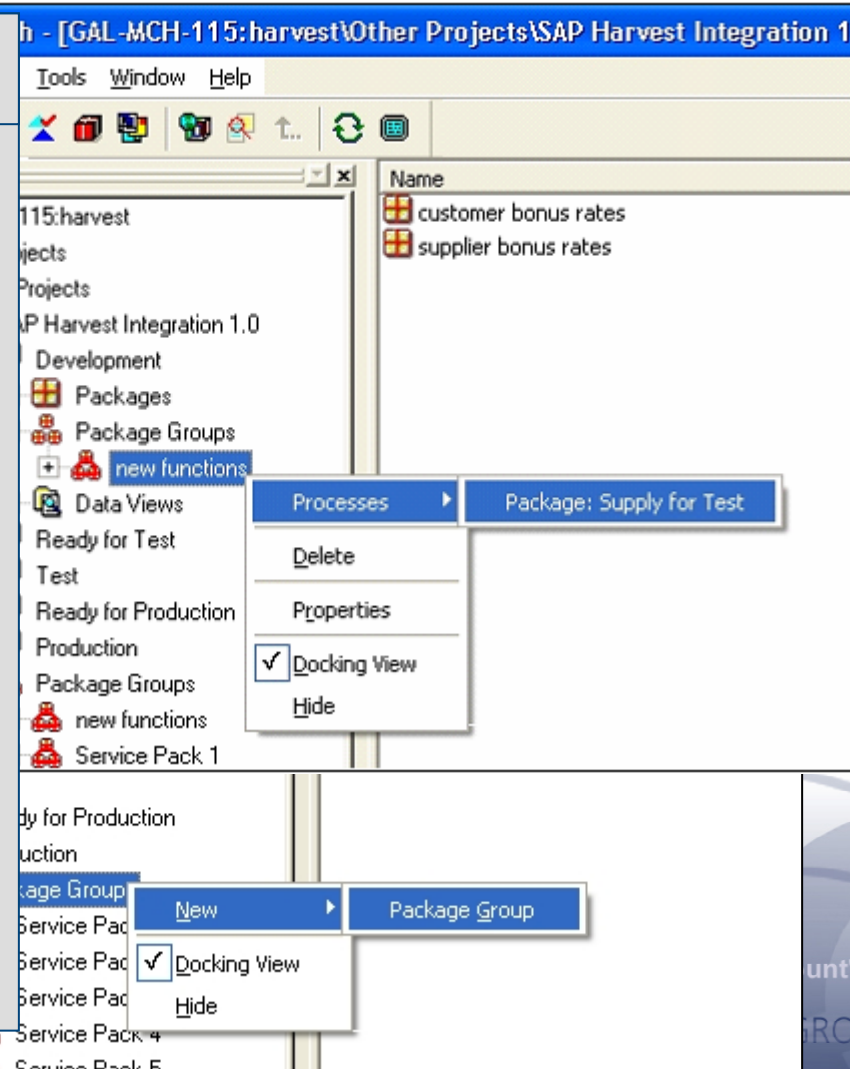
"Consulting without technology does not scale, without people it does not count"

Harvest / Conigma and Solution Manager



Minimum Tool Requirements for Change Management

- Maintenance of change requests, defects and urgent fixes
- Maintenance of multiple versions for:
 - ✓ New releases (in development)
 - ✓ Multiple existing releases (in maintenance)
- Assignment of change requests to regularly scheduled releases
- Assembly of customer defined service packs containing change requests, defects and urgent fixes
- Simultaneous assignment of one single change request to one scheduled release and multiple service packs
- Different, flexible configurable workflows for change requests, defects and urgent fixes
- Workflows that allow branches for change requests, defects and urgent fixes



Harvest / Conigma and Solution Manager



Minimum Tool Requirements for Configuration Management

- Linkage between
 - ✓ SAP transports,
 - ✓ ASCII artifacts (e. g. .NET source code),
 - ✓ Microsoft Office documents and
 - ✓ change requests, defects as well as urgent fixes
- Reconfiguration of all linked objects according to their stages
- Stage based limitation of the possibility to reassign the objects among each other

The screenshot displays the SAP Solution Manager interface with a tree view on the left and a main workspace on the right. The tree view shows a hierarchy: CA Harvest > SAP Harvest In > Development > Packages. The main workspace shows a list of objects under 'Management Support System', including 'G15.100.G15K900097: controlling update' and 'G15.100.G15K900098: monitoring'. A context menu is open over the 'G15.100.G15K900098: monitoring' object, listing options: 'Add new CTS task', 'Release', 'Delete', 'Remove from parent object', 'Properties', and 'Refresh'. Another context menu is open over the 'Packages' folder, listing options: 'Add', 'Import', 'Update package info', 'Properties', and 'Refresh'. The 'Add' menu is further expanded to show: 'New CTS project', 'Existing CTS project', 'New CTS change request', and 'Existing CTS change request'. A third context menu is open over a list of objects, listing options: 'New CTS project', 'Existing CTS project', 'New CTS change request', and 'Existing CTS change request'. The list of objects includes '99: Sachbuchkonten im SAP-FI', '01: Dummy für SP 5', '00: Dummy für SP 5', '01: Dummy für SP 4', '00: Dummy für SP 4', '04: LFZG-Merkmale', '75: Befreiung von gesetzlichen Zahlung...', and 'CR 3307: PKV-Zusatzversicherungen'.

Harvest / Conigma and Solution Manager



Minimum Tool Requirements for Delivery Management

- Delivery management for single defects and urgent fixes in multiple maintenance environments
- Delivery management for scheduled customer defined service packs containing change requests, defects and urgent fixes
- Package oriented trigger of imports on the level of defects, urgent fixes and scheduled customer defined service packs
- Support of import strategies that allow a preliminary import for urgent fixes and a later re-import with regular support package
- Trigger of transports with temporal dependencies in different environments (e. g. APO, CRM, BW, BCA ...)

Conigma objects
Computer Associates - Harvest
CA Harvest
SAP Harvest Integration 1.0
Development
Ready for Test
Packages
customer bonus rates
G15.100.G15 bonus rates
G15.100.G15 bonus rates
supplier bonus rates
Packagegroups
new functions
Test
Ready for Production
Production

Context menu options:
Import
Update package info
Properties
Refresh

Status	Target Request	Project	SI
✓	100	G15K90033	C
✓	200	G15K90033	C
✓	100	G15K90034	C
✓	200	G15K90034	C
✓	100	G15K90038	Tk
✓	200	G15K90038	Tk

Buttons: Import, Cancel, Refresh

... it does not count"

Harvest / Conigma and Solution Manager



The Concept of the Solution Manager Contains:

- Portal to SAP services (e. g. early watch or software change management)
- Business process design and maintenance
- Operating system and database monitoring
- Helpdesk
- Project management
- Customizing distribution within a development environment

Solely SCCM related parts of the concept
(Source: SQS AG, Germany)

The Solution Manager does NOT contain any comprehensive SCCM functionality.



To meet the minimum SCCM requirements of our customers the Solution Manager has to be complemented by Harvest™ and Conigma™



"Consulting without technology does not scale, without people it does not count"



Galileo Group AG
Perchtinger Str. 6
81379 Munich
Germany
Tel. +49 (89) 710 463 60
info@galileo-group.de

All product names and brand names are trademarks
or registered trademarks of their respective holders.

GALILEO GROUP

"Consulting without technology does not scale, without people it does not count"

GALILEO GROUP